

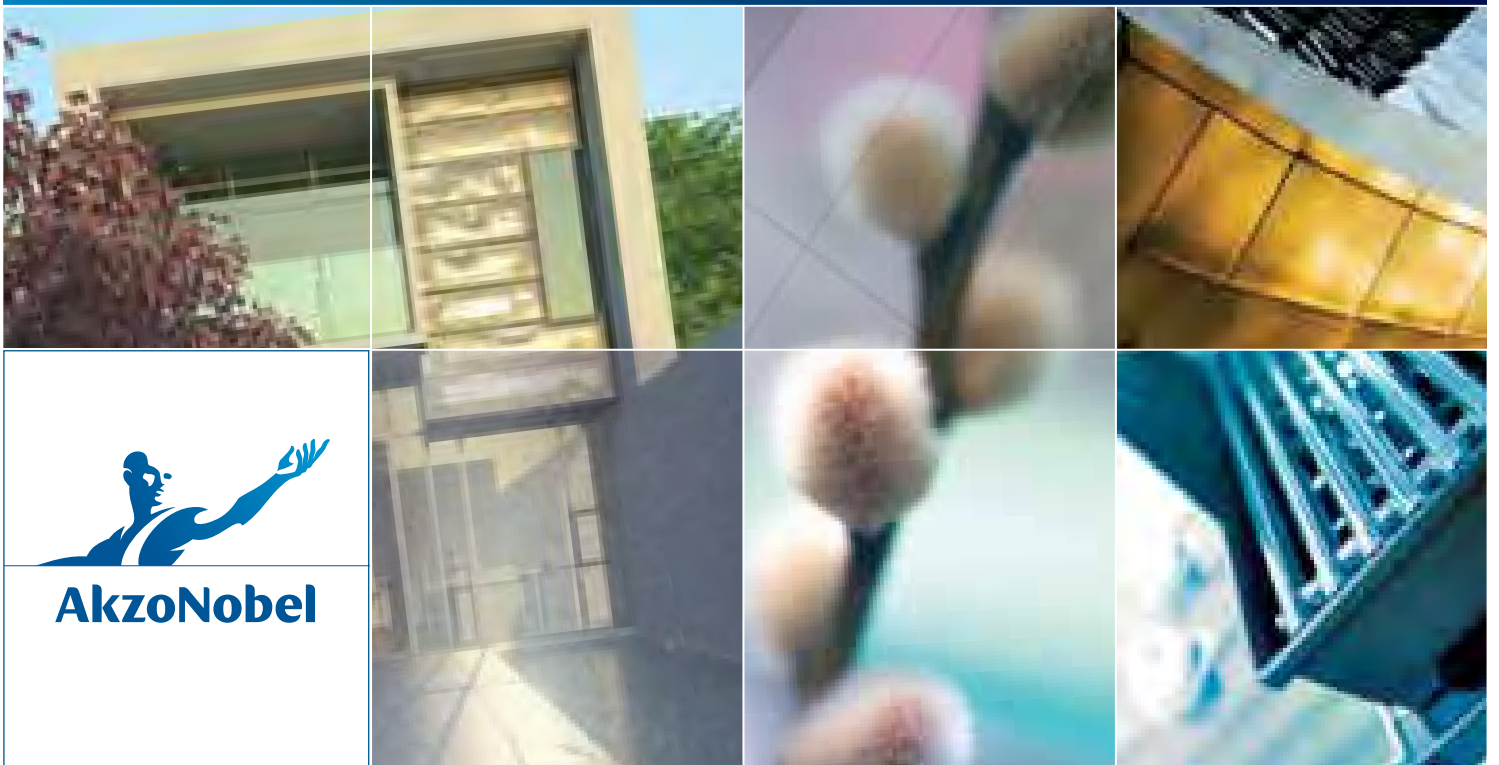
Interpon[®]
powder coatings

EVERY COLOR IS GREEN



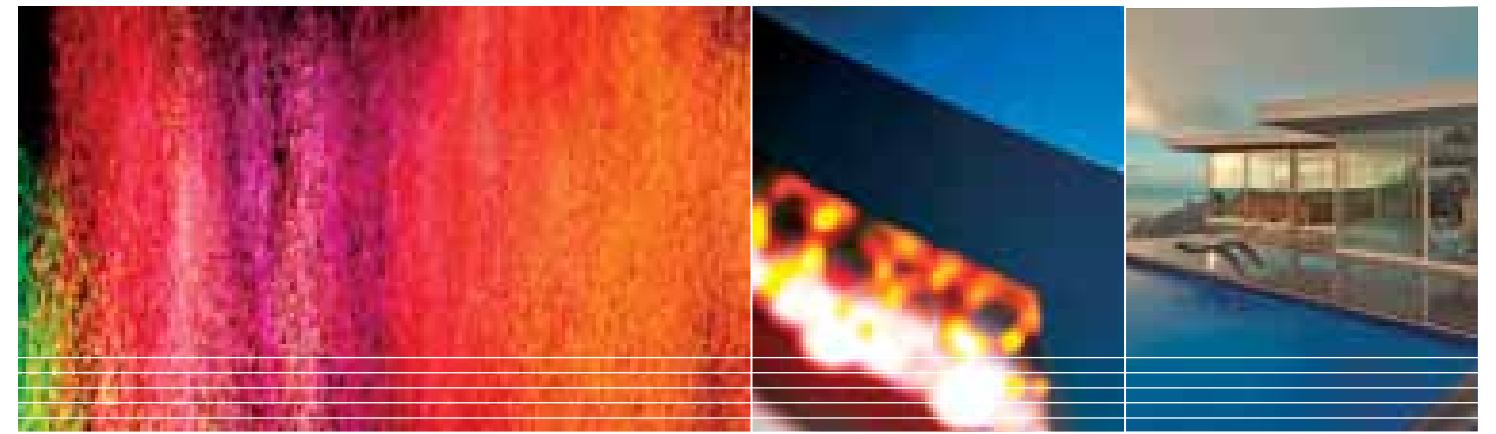
Colors of New Zealand

Powder Coatings for Architectural and Industrial Applications



AkzoNobel

Colors of New Zealand



NAME	Brand	Code	Gloss	Series	RGB	Reflectance
Almond	Interpon D1010	GD160A	Satin	Living	226, 213, 191	67%
Anodic Natural Merlin	Interpon D1000	GY243A	Matt	Pearlescent	172, 178, 175	40%
APO Ghost Grey	Interpon D1010	GL183A	Satin	Living	187, 193, 192	46%
Appliance White	Interpon D1010	GA144A	Satin	Living	249, 254, 253	86%
Arctic White	Interpon TC	MA033A	Gloss	Color Coordinates	242, 253, 255	88%
Arctic White Ally	Interpon D1010	GA145A	Satin	Living	238, 250, 255	89%
Black	Interpon D1000	GN150A	Satin	Living	51, 57, 55	88%
Blaze Blue	Interpon TC	MJ034A	Gloss	Color Coordinates	0, 131, 190	49%
Bond Rivergum	Interpon D1010	GK220A	Matt	Living	112, 124, 110	22%
Bone White	Interpon D1010	GD256A	Matt	Living	200, 202, 188	53%
Bright Red	Interpon TC	MG025A	Gloss	Color Coordinates	161, 64, 52	43%
Bright Silver	Interpon TC	MW201T	Matt	Clears & Silvers	182, 188, 187	45%
Bright White	Interpon D1000	GA030A	Gloss	Color Coordinates	239, 251, 255	89%
Bronco	Interpon D1010	GM158A	Satin	Living	179, 171, 155	43%
Canvas	Interpon D1010	GD142A	Satin	Living	224, 224, 212	66%
Charcoal	Interpon D1010	GL290A	Matt	Living	69, 76, 77	8%
Classic Cream (Smooth Cream*)	Interpon D1000	GD245A	Matt	Living	239, 226, 192	75%
Coral Black	Interpon D1000	GN063A	Gloss	Color Coordinates	50, 55, 53	4%
Dark Grey	Interpon D1010	GL187A	Satin	Living	66, 76, 79	9%
Desert Sand	Interpon D1010	GD209A	Matt	Living	201, 185, 159	51%
Easy Clean Clear	Interpon 200	UZ607I	Gloss	Anti Graffiti	203, 205, 197	58%
Endura Bronze	Interpon D1010	GY248A	Matt	Pearlescent	100, 99, 92	12%
Flame Red	Interpon TC	MG071A	Gloss	Color Coordinates	163, 55, 51	60%
French Blue	Interpon TC	MJ067A	Gloss	Color Coordinates	54, 101, 173	38%
French Grey	Interpon D1010	GK164A	Satin	Living	149, 157, 141	33%
French White	Interpon D1010	GA136A	Satin	Living	252, 255, 249	88%
Gravel	Interpon D1010	GN168A	Satin	Living	60, 67, 68	7%
Grey Friars	Interpon D1010	GL265A	Matt	Living	82, 90, 91	10%
High Voltage Pearl	Interpon D1010	GY135A	Satin	Pearlescent	100, 105, 103	14%
Ironsand	Interpon D1010	GM233A	Matt	Living	72, 74, 69	7%
Karaka	Interpon D1010	GK297A	Matt	Living	65, 70, 71	7%
Lawn Green	Interpon TC	MK038A	Gloss	Color Coordinates	65, 105, 71	18%
Lemon Yellow	Interpon TC	ME068A	Gloss	Color Coordinates	254, 223, 71	80%
Lichen	Interpon D1010	GM264A	Matt	Living	150, 145, 123	29%
Lignite	Interpon D1010	GM284A	Matt	Living	86, 80, 71	7%
Magnolia	Interpon D1010	GD110A	Satin	Living	224, 215, 185	65%
Matt Black	Interpon D1010	GN291A	Matt	Living	50, 55, 54	4%
Mercury Silver	Interpon D1000	GW003K	Gloss	Clears & Silvers	193, 200, 199	52%
MetaPrep™ Grey	Interpon 100	EL286A	Primer	Primers	188, 192, 189	47%
Mid Bronze	Interpon D1010	GM208A	Matt	Living	75, 70, 62	8%
Millennium Silver	Interpon D1010	GY118A	Satin	Pearlescent	155, 161, 158	33%
Mist Green	Interpon D1010	GK246A	Matt	Living	128, 137, 117	26%
Navy	Interpon TC	MJ011A	Gloss	Color Coordinates	53, 75, 94	11%
New Denim Blue	Interpon D1010	GJ276A	Matt	Living	81, 92, 98	12%
Off White	Interpon D1010	GD106A	Satin	Living	240, 235, 215	77%
O'Keefe Grey	Interpon D1010	GL117A	Satin	Living	206, 205, 194	56%
Olive	Interpon D1010	GK107A	Satin	Living	69, 68, 59	7%
Oyster Grey	Interpon D1000	GL258A	Matt	Living	212, 218, 212	61%

At AkzoNobel our priority is our customer's successful future which is why we have consulted with many of our New Zealand customers to review the needs of the Architectural, Industrial and General Trade Coater. Based on this valuable feedback we have released **Colors of New Zealand**, featuring the most comprehensive color and product range ever supplied by AkzoNobel Powder Coatings for the Architectural, Industrial and General Trade Coater. Our aim is to provide exceptional service and contribute greater value to all our customers.

THE Interpon RANGE

Interpon D1000 is a highly durable powder coating developed on proprietary technology, supported by a global 10 year warranty for color and film integrity. **Interpon D1000** provides an ideal finish for architectural residential applications. Offering the applicator excellent application performance with superior mileage, high powder utilisation and faster curing. **Interpon D1000** is our most versatile and best performing product.

Interpon D1010 Premium is an ultra durable powder coating developed on in-house resin technology providing a premium finish for architectural residential and commercial applications. **Interpon D1010 Premium** offers the applicator exceptional application performance with superior mileage and the support of a global 10 year warranty.

Interpon TC

Interpon TC is an exterior durable powder coating designed to meet the specific needs of the Industrial and General Trade Coater for interior and exterior applications. The **Interpon TC** range of powder coatings feature high transfer efficiency, excellent coverage and high levels of damage resistance. **Interpon TC** is available in an extensive range of bright colors, ripples, textures and special effect powders.

COLOR FREEDOM

AkzoNobel understands the importance of color and finish for your business to satisfy customer needs. If you cannot find the right color or finish in this extensive offer, **Colors of New Zealand**, why not take advantage of our made-to-order color service.

For smaller projects requiring as little as 20kg, **Interpon MiniB™** and **Interpon MiniB™ Micro** provide fast service on small batch made-to-order colors that are specific to your needs. Some conditions do apply such as choice of color and product. Please contact the AkzoNobel Customer Care Team for additional advice.

HOW TO SPECIFY Interpon POWDER COATINGS

Once you have chosen Interpon Powder Coatings for your project, it's important to use the correct product. So we make specifying Interpon powder coatings easy. Simply:

- Nominate the Interpon product. e.g. Interpon D1000.
- Nominate the color, finish and product code. e.g. Anodic Natural Merlin Matt GY243A.

To find your nearest Interpon applicator, please contact your Interpon representative or the AkzoNobel Customer Care Team.

COLORS OF NEW ZEALAND DESIGN RANGE:

Interpon Living Series - A classic range of local favourites in subtle and neutral shades.

Interpon Pearlescent Range - A soft metallic finish offering a timeless pearlescent lustre.

Interpon Sablé™ Collection - An exclusive tactile appearance offering enhanced surface scuff resistance.

Interpon Color Energy - A collection of striking colors to brighten modern features.

Interpon Ripple Series - A distinctive course texture finish which also masks substrate or surface defects.

Interpon Bright Silvers - Patented "AS Particle Management Technology", delivering enhanced application and recycling of bright metallics.

Interpon Primers - Enhanced corrosion resistance and service life for steel and other metals.

Interpon Anti Graffiti - An Easy Clean solution for removal of graffiti.

Interpon Clear - A transparent powder coating exhibiting outstanding clarity and durability.

NAME	Brand	Code	Gloss	Series	RGB	Reflectance
Pale White	Interpon D1000	GA154A	Satin	Living	226, 234, 229	71%
Pearl White	Interpon D1000	GA078A	Gloss	Color Coordinates	249, 255, 255	91%
Permanent Green	Interpon D1010	GK253A	Matt	Living	62, 87, 73	11%
Pewter Pearl	Interpon D1000	GY199A	Satin	Pearlescent	137, 143, 141	26%
Pioneer Red	Interpon D1010	GG235A	Matt	Living	130, 72, 64	30%
Pottery	Interpon D1000	GM175A	Satin	Living	185, 173, 151	43%
Primrose	Interpon D1000	GD037A	Gloss	Color Coordinates	248, 233, 194	80%
PZ550 MetaZinc™	Interpon 100	ALZ55N	Primer	Primers	105, 114, 114	16%
PZ770 Zinc Primer	Interpon 100	ALZ77F	Primer	Primers	106, 111, 107	15%
Rangoon Green	Interpon D1010	GK184A	Satin	Living	66, 74, 65	8%
Ripple APO Grey	Interpon TC	ML463A	Gloss	Ripples	179, 184, 181	43%
Ripple Black	Interpon TC	MN427A	Gloss	Ripples	49, 55, 53	4%
Ripple Black Leather	Interpon 700	EN432A	Matt	Ripples	50, 55, 53	4%
Ripple Graphite	Interpon 700	EY422A	Matt	Ripples	89, 93, 90	11%
Ripple White	Interpon TC	MA494A	Gloss	Ripples	251, 255, 255	91%
Rivergum Beige	Interpon D1010	GD185A	Satin	Living	229, 219, 200	68%
Sable™ Asteroid	Interpon D1000	GN271A	Texture	Sable	94, 94, 85	12%
Sable™ Bass	Interpon D1000	GN297A	Texture	Sable	75, 82, 80	8%
Sable™ Black	Interpon D1000	GN341A	Texture	Sable	49, 54, 52	4%
Sable™ Brilliance	Interpon D1000	GL277A	Texture	Sable	100, 104, 101	13%
Sable™ Core Ten™	Interpon D1000	GX350A	Texture	Sable	95, 72, 58	12%
Safety Yellow	Interpon TC	ME096A	Gloss	Color Coordinates	248, 172, 50	75%
Sandstone Grey	Interpon D1010	GL281A	Matt	Living	137, 140, 135	25%
Scoria	Interpon D1010	GG296A	Matt	Living	110, 71, 63	19%
Shale Grey (Gull Grey*)	Interpon D1000	GL284A	Matt	Living	194, 197, 191	49%
Signal Red	Interpon TC	MG036A	Gloss	Color Coordinates	169, 64, 53	49%
SilvaChrome	Interpon 200	P3000I	Gloss	Clears & Silvers	202, 205, 200	54%
Silver Comet	Interpon D1000	GY184C	Satin	Pearlescent	147, 152, 148	29%
Silver Pearl	Interpon D1010	GY120A	Satin	Pearlescent	180, 184, 180	45%
Slate Blue	Interpon D1010	GJ114A	Satin	Living	61, 75, 84	11%
Space Blue	Interpon TC	MJ008A	Gloss	Color Coordinates	44, 70, 116	17%
Stone Beige	Interpon D1000	GD247A	Matt	Living	206, 189, 161	56%
Storm Blue	Interpon D1010	GJ269A	Matt	Living	68, 87, 95	12%
SupaClear	Interpon 600	JZ009K	Gloss	Clears & Silvers	216, 219, 212	62%
Surfmist (Cloud*)	Interpon D1000	GA236A	Matt	Living	230, 233, 224	71%
Tique Steel	Interpon D1010	GW113A	Satin	Pearlescent	86, 91, 92	11%
Titania	Interpon D1010	GA275A	Matt	Living	232, 233, 223	72%
Titanium Lisse Brilliance	Interpon TC	MW112F	Satin	Clears & Silvers	168, 174, 171	38%
Treasured Silver	Interpon D1000	GW103K	Satin	Pearlescent	153, 159, 158	32%
Ultra Silver	Interpon D1000	GY070A	Gloss	Clears & Silvers	174, 183, 185	43%
Wedgewood	Interpon D1010	GJ180A	Satin	Living	99, 134, 160	32%
White	Interpon D1000	GA124A	Satin	Living	250, 255, 253	91%
White Birch	Interpon D1000	GA057A	Gloss	Color Coordinates	255, 253, 231	91%
Wizard	Interpon D1010	GJ119A	Satin	Living	83, 106, 115	16%
Woodland Grey	Interpon D1000	GL205A	Matt	Living	92, 96, 89	14%
X15 Orange	Interpon TC	MF035A	Gloss	Color Coordinates	228, 116, 51	69%

COLOR FOR ARCHITECTURAL & INDUSTRIAL DESIGN



Interpon LIVING SERIES

Arctic White Ally Satin GA145A	White Satin GA124A	French White Satin GA136A	Classic Cream (Smooth Cream*) ● Matt GD245A	Magnolia Satin GD110A	O'Keefe Grey Satin GL117A
Appliance White Satin GA144A	Off White Satin GD106A	Almond Satin GD160A	Stone Beige Matt GD247A	Pottery Satin GM175A	Bronco Satin GM158A
Surfmist (Cloud*) ● Matt GA236A	Rivergum Beige Satin GD185A	Desert Sand ● Matt GD209A	Lichen ● Matt GM264A	Pioneer Red ● Matt GG235A	Lignite ● Matt GM284A
Titania ● Matt GA275A	Canvas Satin GD142A	French Grey Satin GK164A	Mist Green ● Matt GK246A	Scoria ● Matt GG296A	Mid Bronze Matt GM208A
Pale White Satin GA154A	Bone White ● Matt GD256A	Bond Rivergum (Rivergum) ● Matt GK220A	Permanent Green ● Matt GK235A	Rangoon Green Satin GK184A	Olive Satin GK107A
Oyster Grey Matt GL258A	Wedgewood Satin GJ180A	Wizard Satin GJ119A	Storm Blue ● Matt GJ289A	Slate Blue Satin GJ114A	Dark Grey Satin GL187A
Shale Grey (Gull Grey*) ● Matt GL284A	APO Ghost Grey Satin GL183A	New Denim Blue ● Matt GJ276A	Grey Friars ● Matt GL265A	Charcoal Matt GL290A	Karako ● Matt GK297A
Sandstone Grey ● Matt GL281A	Woodland Grey Matt GL205A	Ironsand ● Matt GM233A	Gravel Satin GN168A	Black Satin GN150A	Matt Black (Ebony) ● Matt GN291A

Interpon PEARLESCENT RANGE

Silver Pearl Satin GY120A	Treasured Silver Satin GW103K	Silver Comet Satin GY184C	Endura Bronze Matt GY248A	High Voltage Pearl Satin GY135A	Tique Steel Satin GW113A
Anodic Natural Merlin Matt GY243A	Millenium Silver Satin GY118A	Pewter Pearl Satin GY199A			

Interpon SABLÉ™ COLLECTION

Sablé™ Brilliance Texture GL277A	Sablé™ Core Ten™ Texture GX350A	Sablé™ Asteroid Texture GN271A	Sablé™ Bass Texture GN297A	Sablé™ Black Texture GN341A

COLOR FOR INDUSTRIAL DESIGN



Interpon COLOR COORDINATES

Arctic White Gloss MA033A	Bright White Gloss GA030A	Pearl White Gloss GA078A	White Birch Gloss GA057A	Primrose Gloss GD037A	
Lemon Yellow ● Gloss ME068A	Safety Yellow ● Gloss ME036A	X15 Orange ● Gloss MF035A	Signal Red ● Gloss MG036A	Bright Red ● Gloss MG025A	Flame Red ● Gloss MG071A
Blaze Blue Gloss MJ034A	French Blue Gloss MJ067A	Space Blue Gloss MJ008A	Navy Gloss MJ011A	Lawn Green Gloss MK038A	Coral Black Gloss GN063A

Interpon RIPPLE SERIES

Ripple White Gloss MA494A	Ripple APO Grey Gloss ML463A	Ripple Graphite ● Matt EY422A	Ripple Black Leather ● Matt EN432A	Ripple Black Gloss MN427A

Interpon CLEARS AND SILVERS

SupaClear Gloss JZ009K	SilvaChrome ● Gloss P3000I	Mercury Silver Gloss GW003K	Bright Silver ● Matt MW201T	Titanium Lisse Brilliance ● Satin MW112F	Ultra Silver Gloss GY070A

Interpon PRIMERS

MetaPrep™ Grey EL286A	PZ550 MetaZinc™ ALZ55N	PZ770 Zinc Primer ALZ77F

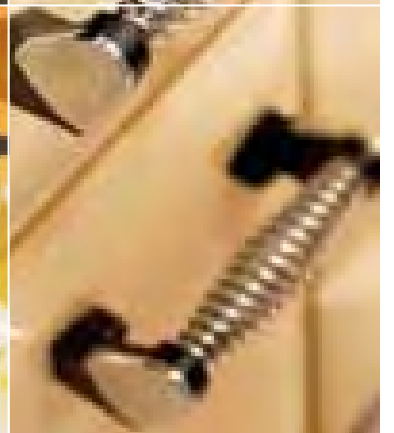
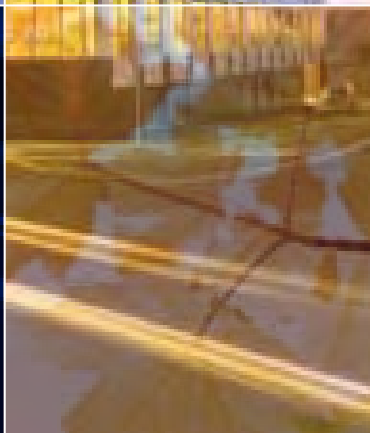
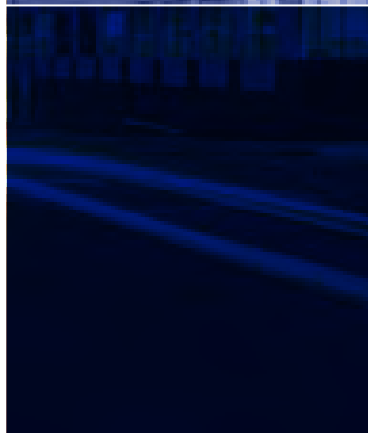
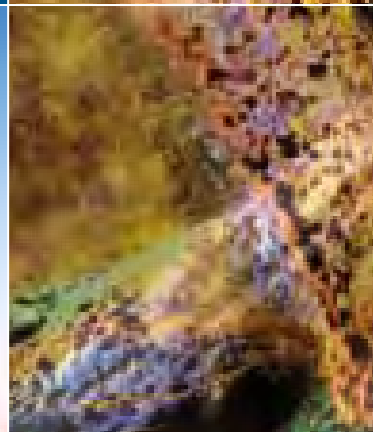
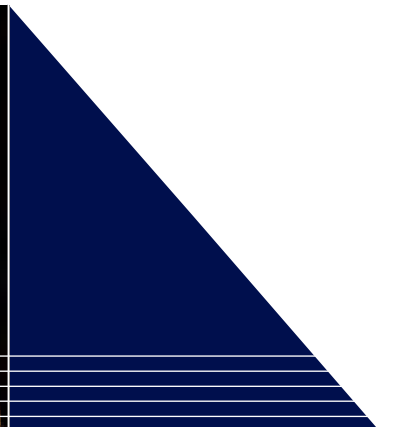
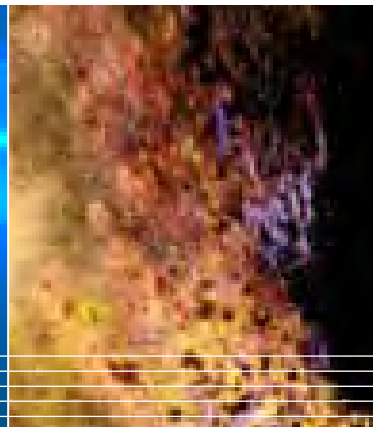
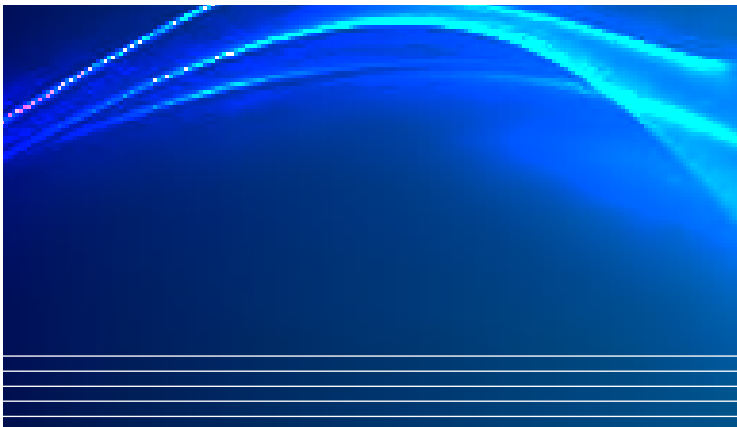
Interpon ANTI GRAFFITI

Easy Clean Clear Gloss UZ007I

Colors displayed on this color card are a guide only and have been matched as close as possible to Interpon production standards under daylight conditions. Due to the nature of the printing process some degree of color and gloss level variation may occur. Where more than one finish is available product color may vary. We recommend that you use production line prepared samples for final color selection or approval.

- Colors displaying the orange color dot are not recommended for use where high UV exposure is likely.
- Colors displaying the red color dot are for internal use only
- Colors displaying the blue color dot are recommended to be over coated with SupaClear powder coating for exterior use or aggressive internal applications
- Colors displaying the green color dot are COLORSTEEL® COORDINATE





Sales and Support Contacts

NEW ZEALAND

e: salesnz@interpon.com

www.interpon.co.nz

Tel: 0800 150 527

Fax: 09 828 1129



Disclaimer

Unless otherwise agreed by us in writing, any contract to purchase products referred to in this color card and any advice that we give in connection with the supply of products are subject to our standard conditions of sale. Typical end uses for Interpon products are displayed in this publication using actual projects and representative images.

Interpon® is a registered trademark of AkzoNobel International BV. MiniB™, Sable™, Core Ten™, MetaPrep™, MetaZinc™ are trademarks of Akzo Nobel Pty Limited.

Over time performance may vary between COLORBOND® steel and Interpon Powder Coatings due to the different paint technologies used. COLORSTEEL® is a registered trademark of BHP New Zealand Steel Limited. * Color names are trademarks of BlueScope Steel Limited.

AkzoNobel would like to acknowledge and thank NALCO, Bradnams and Nulook for images used on this color card.

© Copyright 2010 Akzo Nobel Pty Limited ABN 59 000 119 424 June 2010. Design: jwam.com.au



Proudly Supplied by:

Interpon® powder coatings

EVERY COLOR IS GREEN

www.interpon.co.nz